



sangenic[®] tec

INSTRUCTIONS FOR USE

A. EASY TO SET UP

1. Pull film evenly out of refill.
2. Gather film together and push through.
3. Remove lid from base of unit.
4. Tie knot in film.
5. Use hook to secure knot.
6. Replace lid on base of unit.



B. EASY TO SET UP

1. Open lid ready for first nappy.
2. Push nappy until gripped.
3. Twist 360° clockwise until nappy is sealed.
4. Nappy is gone!
5. Plunge lid onto twisted film.
6. Fresh film is ready for next nappy.



C. EASY TO EMPTY

1. Remove lid from base unit.
2. Unhook knot and drop into base.
3. Pull additional film through to cut.
4. Use cutter blade to cut film.
5. Tub is ready to empty.



Contact details can be found at www.tommeetippee.com

WARNING! Plastic film can be dangerous.
To avoid suffocation keep plastic film away from babies and children.
Do not store in or near babies' sleeping area.

WARNING! To prevent injury, do not attempt to take this unit apart other than to replace the film or empty. User maintenance other than cleaning is not required.

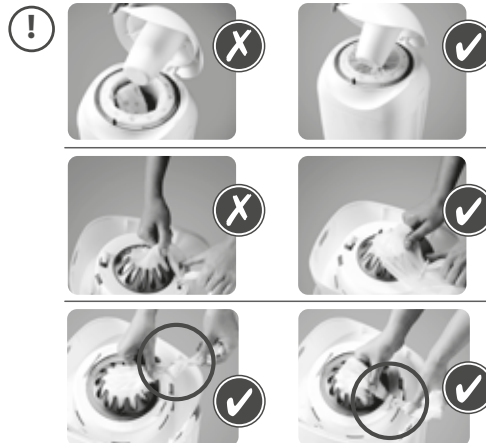
WARNING! To prevent injury, do not stand or sit on this product.

WARNING! For adult use only. Do not allow your child to play with this product.

WARNING! Do not fill the product with water or other liquids. Serious accidents have occurred to babies and young children when products such as this have been filled with liquid.

WARNING! The cutter blade is very sharp. Keep hands clear of the blade area and be very careful when cutting the film.

Film is Biomaster[®] protected to inhibit 99% of germs. Antibacterial protection is present in the film and not the other components of this product. Film is treated with Biomaster silver biocide tested to ISO 22196:2011. Please use biocides responsibly.



tommeetippee.com

Jackel International Limited trading as
Mayborn Group
Northumberland Business Park West
Cramlington Northumberland NE23 7RH, UK
TOMMEE TIPPEE is a trading style of Jackel International Limited.
Copyright © Jackel International Limited 2012.

74305001